

FIREPLACE INSERTS FROM BRUNNER



Panorama-Kamin 51/50/50/50

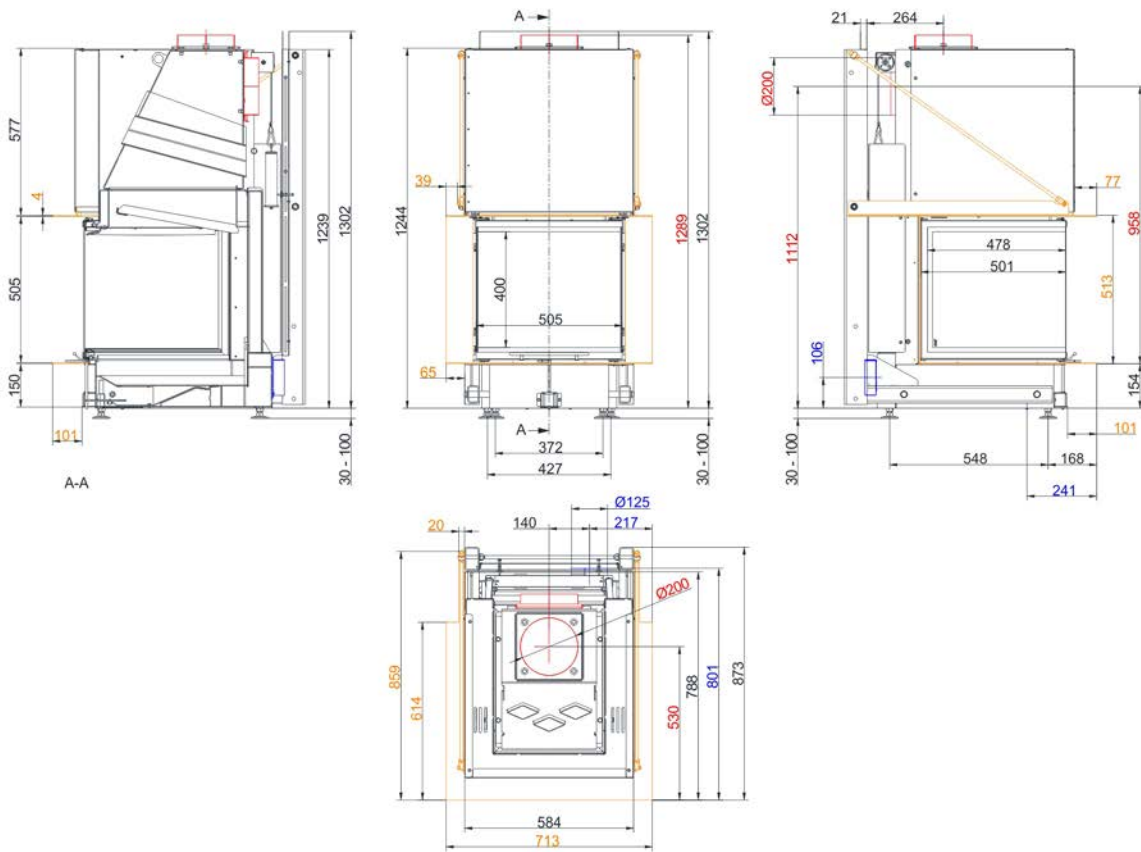
lifting door (easy-lift)

State: 2020-07-01

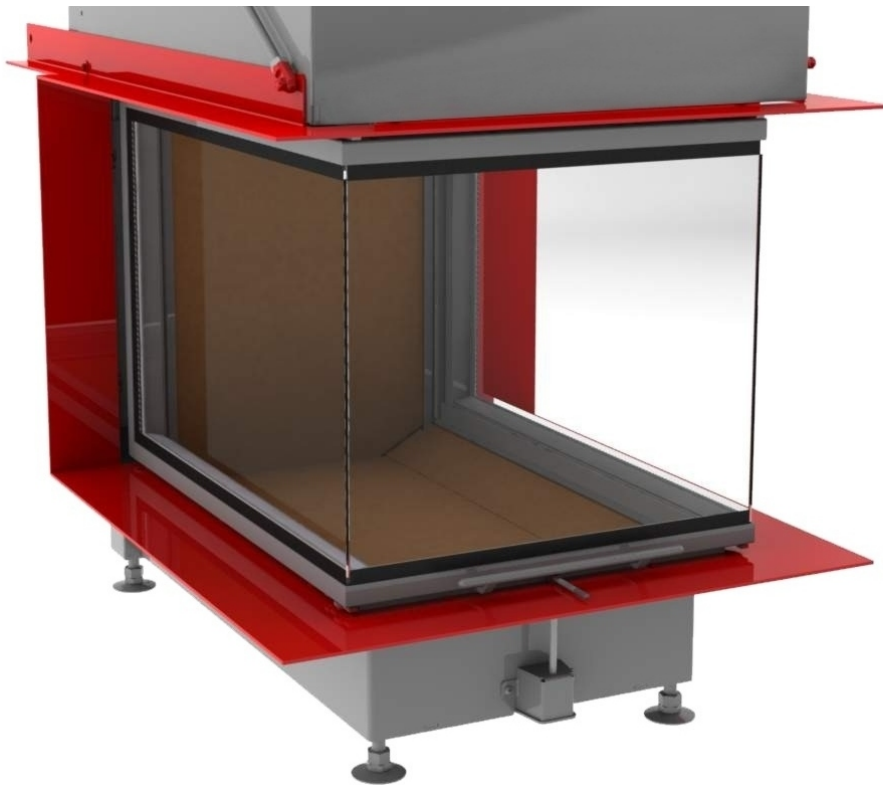


BRUNNER[®]
made in germany.

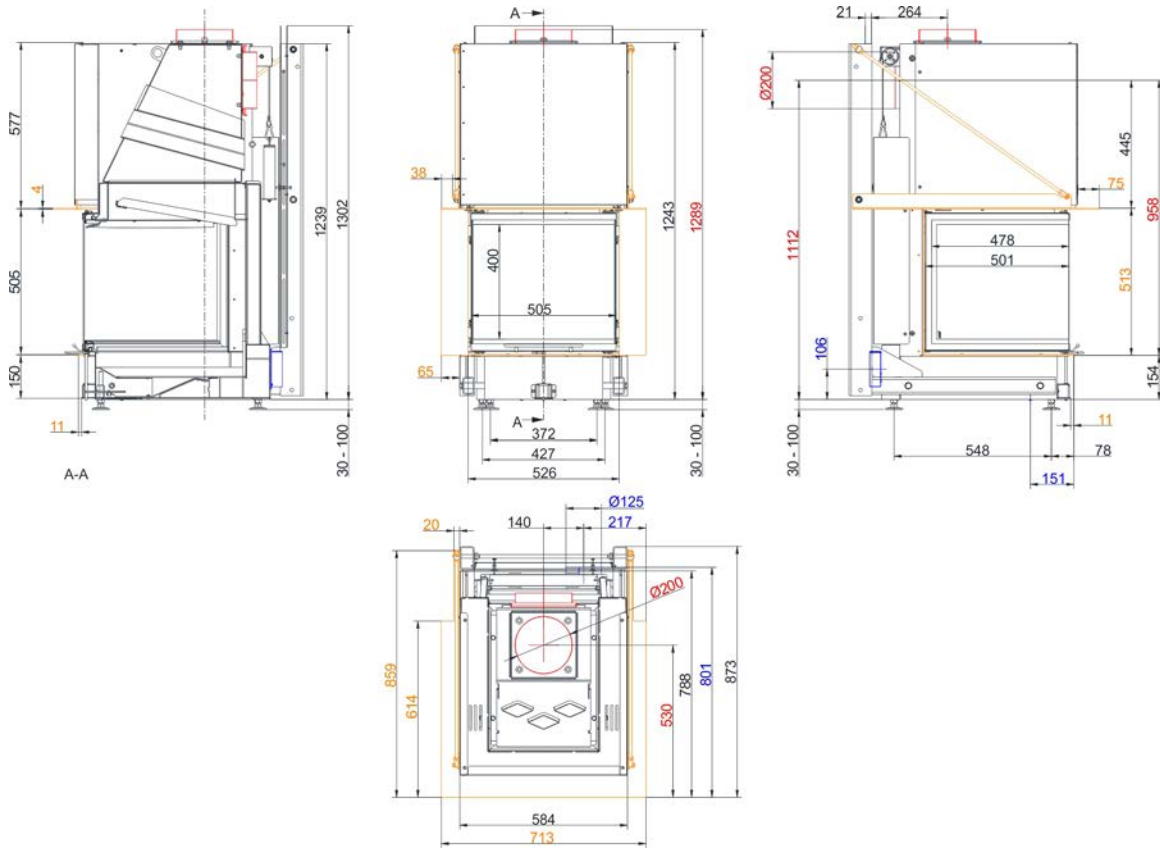
Dimension sheets - Panorama-Kamin 51/50/50/50 lifting door (easy-lift)



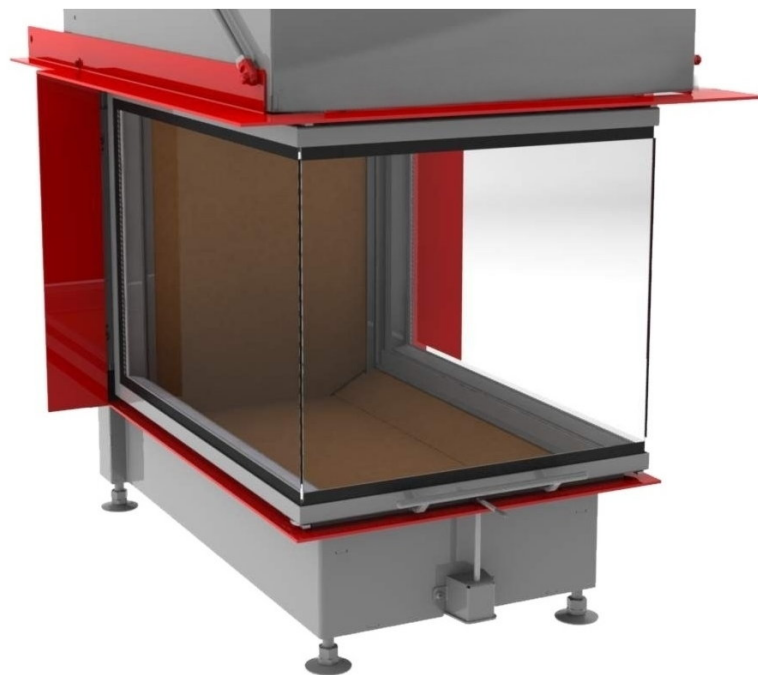
... with wide frame



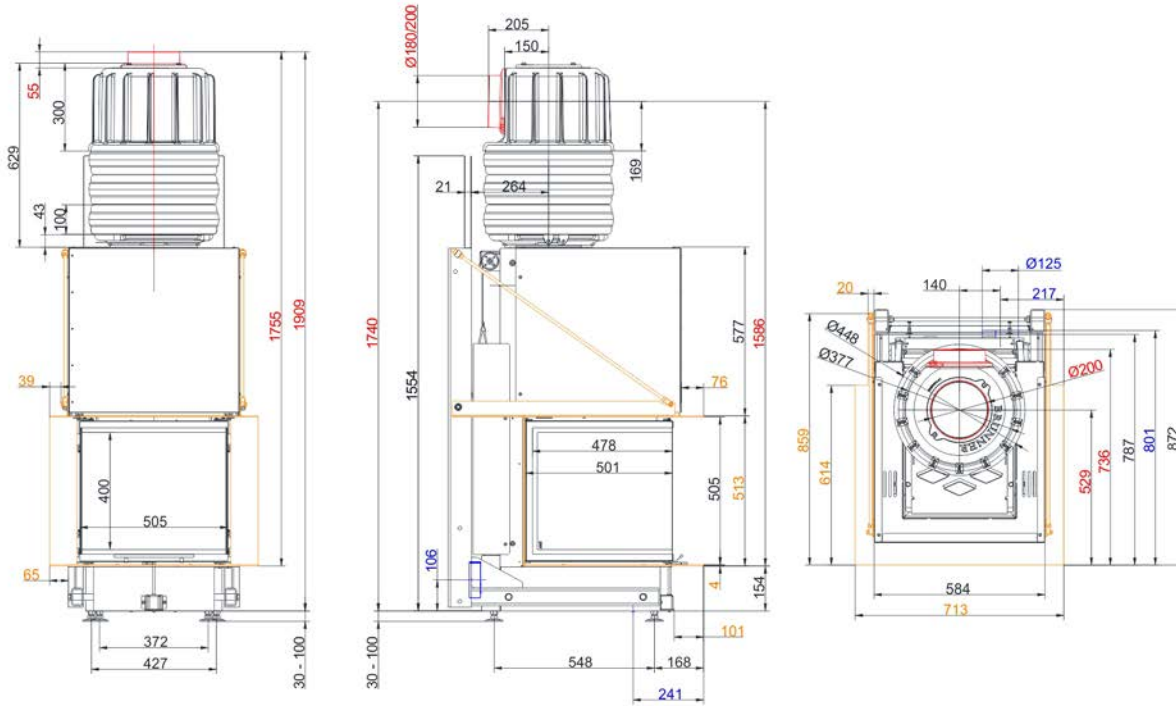
Dimension sheets - Panorama-Kamin 51/50/50/50 lifting door (easy-lift)



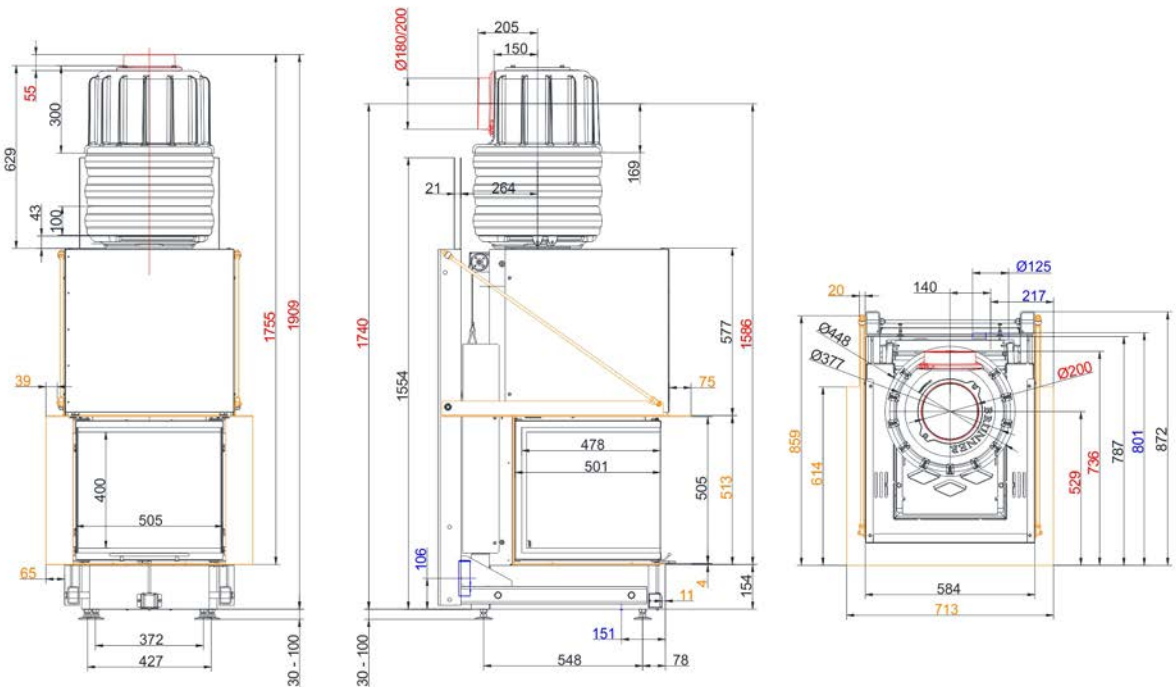
... with narrow frame



Dimension sheets - Panorama-Kamin 51/50/50/50 lifting door (easy-lift)

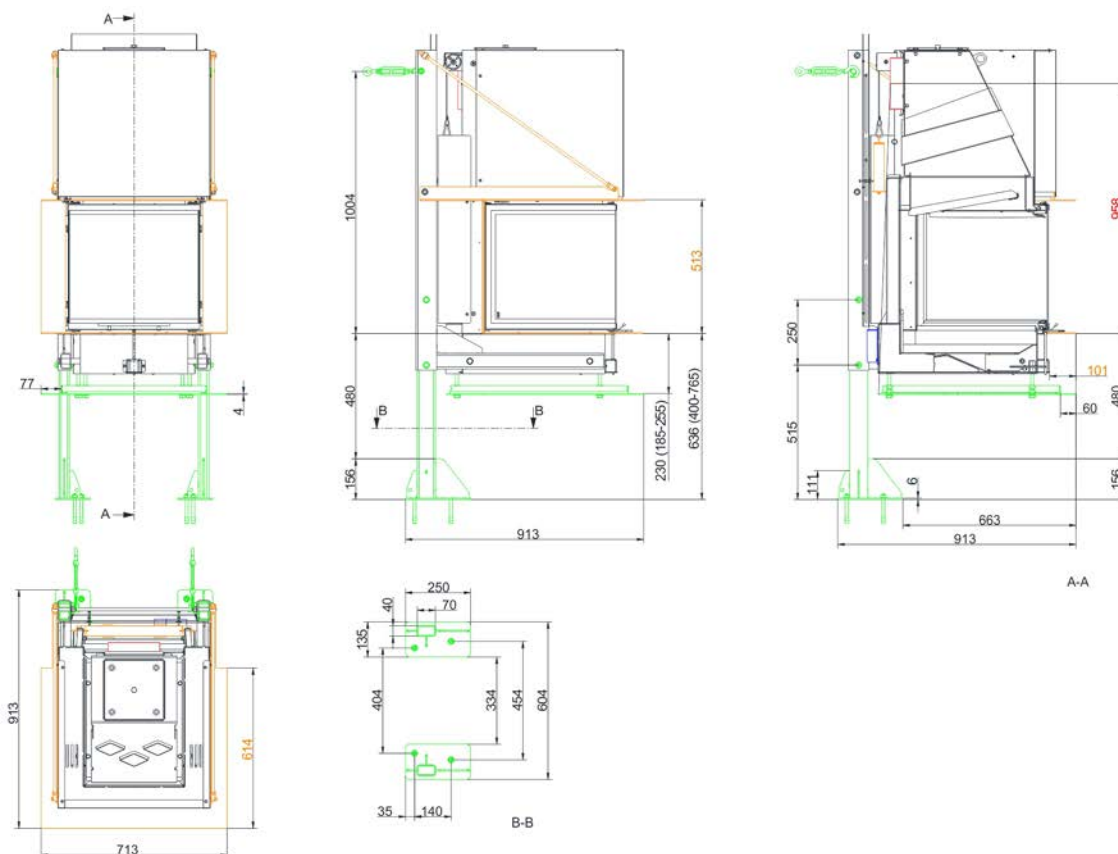


... with wide frame and MAS



... with narrow frame and MAS

Dimension sheets - Panorama-Kamin 51/50/50/50 lifting door (easy-lift)



... suspended frame

We suggest for CAD planning Palette CAD. Permanent updated drawings: www.brunner.de
 Frames /flue gas outlet connection/ combustion air supply connection/ front variants are marked in color.

Planning and installation - Panorama-Kamin 51/50/50/50 lifting door (easy-lift)

Tested according to		EN 13229 W
Values measured at		Rated capacity ¹⁾
Suitable for all construction types according to rules		OK
EEl		107.5
Data for functional demonstration		
Rated heat power	kW	9
Fire wood volume	kg/h	2.6
Combustion performance	kW	11
Flue gas mass flow	g/s	8.6
Flue gas temperature after:		
metallic hot air hood	°C	235
Necessary supply pressure	Pa	12
Combustion air consumption	m ³ /h	26
Flue gas pipe connection Ø	mm	200
Combustion air connection Ø	mm	125
Heat distribution		
Insert / reheating surface	%	55 / -
Glass pane (single / double)	%	45 / -
Cross-section of gratings ²⁾		
Convection air	cm ²	600 / 0 / 0
Supply air	cm ²	600 / 0 / 0
Minimal oven surface for closed construction type		
Heat dissipating surface	m ²	4
Minimal distances of the fireplace		
to insulation layer	cm	6
to mounting floor	cm	6
Thermal insulation with air gratings ³⁾		
Mounting wall	cm	5
Floor	cm	0
Ceiling	cm	18
Brick lining for combustible wall	cm	10
Weight		
Fireplace / combustion chamber	kg	236 / 25
Meets requirement/limit values for:		
Germany/ Austria / Switzerland		1.BImSchV (Stufe 2) / 15a BVG (2015) / LRV

1) Indications to "Rated power" determined with metallic reheating surface

2) for fireplace inserts / flue gas pipe / metallic reheating surface

3) Insulation material Vermiculite with heat protection panel, Values determined with upper air sections; stove cladding is heat emitting.